



The Woodlands 52 Bakewell Road
, Matlock, DE4 3AU

£650,000



The Woodlands 52 Bakewell

, Matlock, DE4 3AU

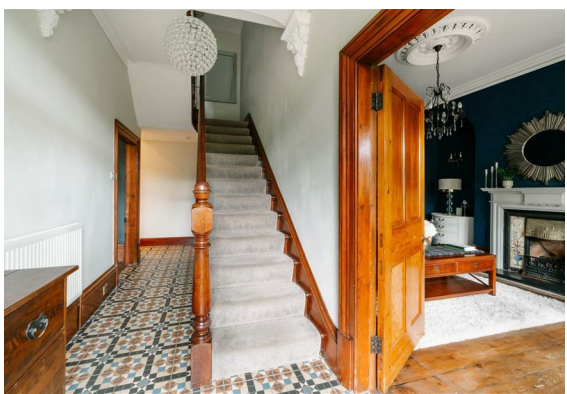
Situated in an elevated position, is this spacious and beautifully styled 6 bedroom detached family home built in 1880. Positioned within generous grounds, The Woodlands is located within close proximity to the centre of Matlock and benefits from tiered gardens featuring a range of different seating areas and entertaining spaces, including a sun terrace with garden bar and purpose-built powered garden office with lounge area. Offering 2830 sqft of living accommodation over 3 storeys the property boasts original Victorian features including original cornicing and ceiling roses,

The ground floor comprises; Entrance porch and grand galleried entrance hallway, front aspect living room with open fireplace and bay window, formal dining room with second open fireplace and bay window. Snug with log burning stove, open plan dining kitchen with integrated appliances and bifold doors onto the side garden. Downstairs WC.

The first floor comprises; 4 well proportioned double bedrooms, main family bathroom and utility room.

The second floor comprises; Two further bedrooms currently being used a large master suite with dressing room and en-suite bathroom. One of the bedrooms is currently being used as a dressing room.

The property is a former schoolhouse,





and is one of Matlock's noteworthy buildings having been awarded a blue plaque by Matlock Civic Society.

**Dales and Peaks ForwardMove
- Please read**



Floor Plan

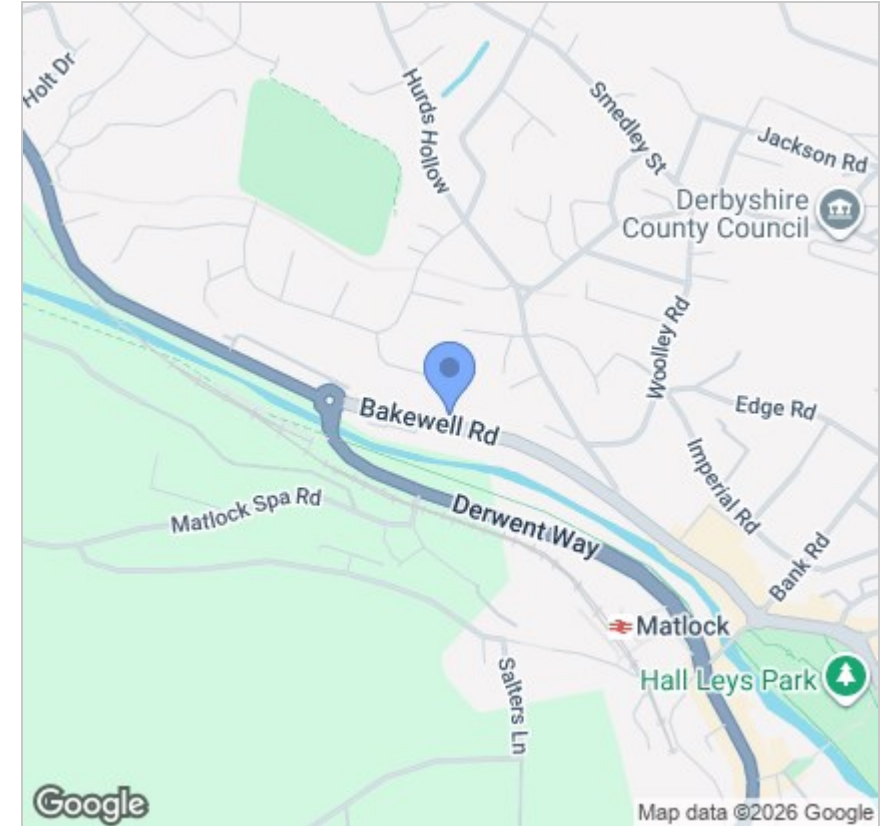


Viewing

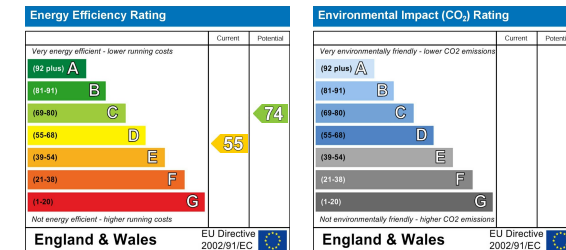
Please contact our Chesterfield Office on 01246 567540 if you wish to arrange a viewing appointment for this property or require further information.

These particulars, whilst believed to be accurate are set out as a general outline only for guidance and do not constitute any part of an offer or contract. Intending purchasers should not rely on them as statements of representation of fact, but must satisfy themselves by inspection or otherwise as to their accuracy. No person in this firm's employment has the authority to make or give any representation or warranty in respect of the property.

Area Map



Energy Efficiency Graph



131 Chatsworth Road, Chesterfield, Derbyshire, S40 2AP
 T: 01246 567540



E: info@dalesandpeaks.co.uk
 www.dalesandpeaks.co.uk